

STUDENT WEEKLY

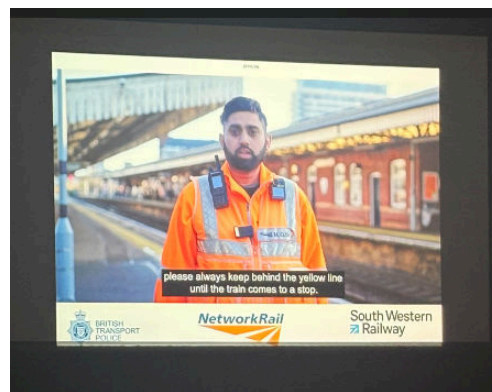
Week A

w/c Monday 9th February 2026

Year 7 - Network rail assembly

Year 7 took part in an assembly from Network Rail where they learned about the dangers of the tracks at the railway. A member of network rail spoke to them about the dangers such as the live rail.

We have had speakers from Transport for London and Network rail in to speak to students over the past year as part of our Personal Development curriculum.



Year 8/9 and Sixth form trip to the Tate Modern

Our recent Art school trip gave students the chance to experience art up close and in context. Surrounded by inspiring works and creative spaces, they explored many exhibitions within the Tate Modern engaging directly with artworks, observing and asking questions, in thoughtful discussion.

General Notices

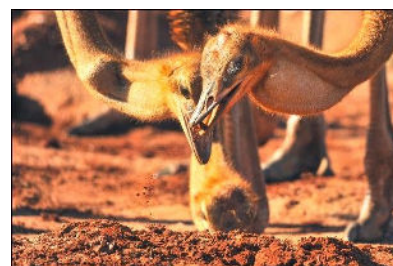
Year 11/13 PPE exams are taking place next week so please be considerate when near to the main hall, LD or the meeting room near reception if the exam signs are out and walk past in silence. See the end of the newsletter for the PPE timetable

Year 9/10 Year 9/10 students will have an opportunity to explore careers at the RugbyWorks National Apprenticeship Show at Sandown Park Race Course on Tuesday 10th February. Ms Lewellyn

Year 9/10 Tapas Trip - Mr Hurl is organising a Tapas trip where students in year 9 or 10 can try Spanish food. If you are interested in going see Mr Hurl in 106a

Science fact of the week

Ostriches swallow stones, pebbles, and sand (known as gastroliths) to aid digestion because they lack teeth to chew food. These stones are stored in their gizzard, a muscular stomach part, where they grind up tough plants, seeds, and roots, sometimes weighing over a kilogram. This essential behavior helps break down food for nutrient absorption.



w/c Monday 9th February 2026

Attendance



Weekly Attendance Raffle

Our **Weekly Attendance Raffle** will continue during **Faculty Assemblies!**

If you attended the academy for **all 5 days last week**, you achieved **100% attendance** you have earned a **raffle ticket** 🎟️

Your Academic Mentor will give this to you on **Monday during AM.**

What you need to do:

- Write your **name and the date** clearly on the raffle ticket
- Place your ticket in your **Faculty attendance box** in the dining hall **before assembly** (Your Academic Mentor can also help add it for you)



Attendance Streaks – Keep It Going!

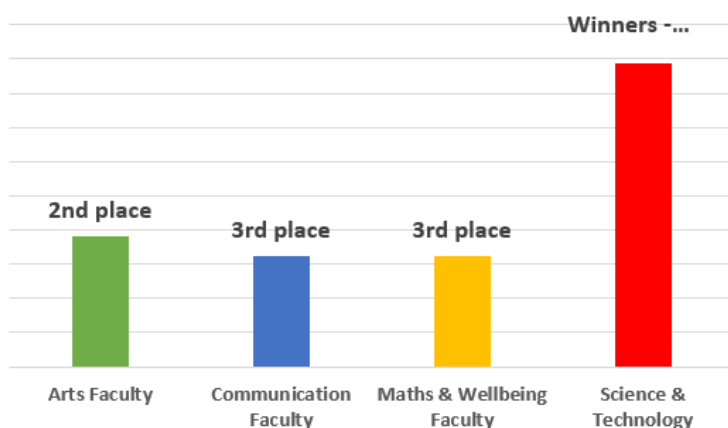
Every week you achieve **100% attendance**, you will:

- Be entered into the **weekly raffle draw**
- Receive a **new raffle ticket each week**
 - Earn **5 AP points per week**

The more weeks you attend every day, the more chances you have to win!

Thank you for continuing to show commitment to your learning and for helping us build a strong culture of **excellent attendance** across the academy. Keep up the great work! 🙌

Attendance w/b 26th Jan



Academic Mentor winners w/b 26th January 2026

7 Latimer

7 Turing

7 Berners Lee

11 Angelou

STUDENT WEEKLY

Week A

w/c Monday 9th February 2026



Meticulous

Pronounced: muh-ti-kyoo-luhs
(adjective)

Showing great attention to detail; very careful and precise.

Etymology: from Latin meticulous, from metus 'fear'. The word came to mean 'overcareful about detail'.



Transform



Synonyms & Antonyms



Use



Career Link

AM Notices

We have an increasing amount of lost property and unclaimed confiscated items in reception from last term.

If you have lost something, or had something confiscated, please go to reception to collect it before the end of term. Any items that are not collected by February half term, will be donated to charity.

OVERVIEW - WHOLE ACADEMY

	Monday	Tuesday	Wednesday	Thursday	Friday
ARTS- Angelou and Bowie	Word of the Week	Assembly	Silent Reading Y7/8/9 Y10/11/12/13 PSHE	Y7 Aspire Award 8/9 Guided Reading Y10/11/12/13 PSHE	Y7/8/9/10 Numeracy Ninja Y11/12/13 Quiz
COMMUNICATIONS- Attenborough and Berners Lee	Word of the Week	Y7 Aspire Award Y8/9 GUIDED READING Y10/11/PSHE 12/13 Assembly	Assembly 12/13 PSHE	Silent Reading Y7/8/9 Y10/11/12/13 PSHE	Y7/8/9/10 Numeracy Ninja Y11/12/13 Quiz
MATHS AND WELLBEING - Turing and Simmonds	Word of the Week	Y7 Aspire Award Y8/9 GUIDED READING Y10/11/PSHE 12/13 Assembly	Silent Reading Y7/8/9 Y10/11/12/13 PSHE	Assembly 12/13 PSHE	Y7/8/9/10 Numeracy Ninja Y11/12/13 Quiz
SCIENCE AND TECH- Franklin and Latimer	Word of the Week	Y7 Aspire Award Y8/9 GUIDED READING Y10/11/PSHE 12/13 Assembly	Silent Reading Y7/8/9 Y10/11/12/13 PSHE	Y7/8/9/10 Numeracy Ninja Y11 Quiz	Assembly/12/13 Quiz

LAST WEEK

ACHIEVEMENT POINTS -

Totals		Achievement	Totals		Achievement
Arts		1233	Maths & Well-being		1600
Totals		Achievement	Totals		Achievement
Communications		2533	Science & Technology		1789

STUDENT WEEKLY

Week A

w/c Monday 9th February 2026

PE Extra Curricular Timetable

	Break 1	Break 2	After School (3.15 - 4.15)	
Monday		Girls Basketball Y7-9 (Boys Gym)		
Tuesday			Boys Basketball (Y7-10) BOR/JDU/AFI/DSU Boys Gym	Netball (Y7-Y10) EMR Girls Gym
Wednesday		Girls Football Y7-9 (Boys Gym)	Boys Football (Y7-Y10) AFI/DSU/BOR/AOR/ JDU Field	
Thursday			Girls Football (Y7-10) EMR/AFI Field	
Friday				

**Rivers
Extra Curricular
PE
Timetable
Spring 1**

Extra Curricular Timetable - General ECAs

	BEFORE SCHOOL	BREAK 1	BREAK 2	AFTER SCHOOL
MONDAY	BREAKFAST CLUB CANTEEN PJO /VSH	ORIGAMI CLUB - SBO - 219		DRAMA CLUB - XHU - 135 YEAR 11 ENGLISH INTERVENTION (3-4PM)
TUESDAY		CRAFT CLUB - ISH/LSI - 271 UNO CLUB - EMA - 112	ART CLUB - ESH - 124	CODING CLUB (YEAR 7) - PRA - 111 BOYS BASKETBALL - BOYS GYM NETBALL - GIRLS GYM MOCK TRIAL BAR - WBE/HSM - 272 DEBATE CLUB - LMU/HSM -272 YEAR 11 HUMANITIES INTERVENTION 3-4PM (WEEK A) YEAR 11 MFL INTERVENTION 2-4PM (WEEK B)
WEDNESDAY		ART CLUB - HMU - 121 YEAR 7 GIRLS BASKETBALL - GIRLS GYM YEAR 11 - YEARBOOK - HSM - 261 MUSIC CLUB - LHA - 135	MOCK TRIAL BAR - WBE/HSM - 151	BOYS FOOTBALL - BOYS GYM KS3 SCIENCE CLUB - LPO - 232 MATH HOMEWORK CLUB - BSH - 203 KS3 DT CLUB - TBA - 139 YEAR 11 SCIENCE INTERVENTION SING! 3-4PM - LHA - 135
THURSDAY		WELLBEING CLUB - EMA - 112	HUMANITIES CLUB - JCA - 172	GIRLS FOOTBALL - PE BLOCK ANIME CLUB - SRE - 273 YEAR 11 MATHS INTERVENTION 3-4PM YEAR 11 OPTIONS INTERVENTION 3-4PM YEAR 11 MUSIC COURSEWORK CLUB - LHA - 135

To sign up to a club, simply attend and the teacher will add you to the register

STUDENT WEEKLY

Week A

w/c Monday 9th February 2026

PPE Timetable Year 11 Main Exams - Hall/LD

Year 11 PPE 2 - Week 1					
Week A					
	Monday 9th February 2026	Tuesday 10th February 2026	Wednesday 11th February 2026	Thursday 12th February 2026	Friday 13th February 2026
Periods 1&2	English Language Paper 1 1hr 45 mins	Maths Paper 1 (Non calculator) 1 hr 30 mins	Chemistry Paper 1 1hr 15 mins	Maths Paper 2 (Calculator) 1hr 30 mins	Physics Paper 1 1hr 15 mins
Periods 3&4	Biology Paper 1 1hr 15 mins	English Literature Paper 2 2hr 15 mins	Geography Paper 1 hr 30 mins History Paper 1 2 hours	Economics Paper 1 1hr 45 mins Citizenship Paper 1 1hr 45 mins	Computer Science Paper 1 2hrs Hospitality & Catering 1hr 20 mins
Period 5	Spanish H Listening 45 mins		Spanish F Listening 35 mins	Spanish Reading - Higher (1hr) Foundation (45mins)	

Year 11 PPE 2 - Week 2					
Week B					
	Monday 23rd February 2026	Tuesday 24th February 2026	Wednesday 25th February 2026	Thursday 26th February 2026	Friday 27th February 2026
Periods 1&2	Maths Paper 3 (Calculator) 1 hr 30 mins	Chemistry Paper 2 1hr 15 mins	Computer Science Paper 2 2 hours Citizenship Paper 2 1hr 45mins	Physics Paper 2 1hr 15 mins	Design Technology 2 hours
Periods 3&4	Biology Paper 2 1hr 15 mins	History Paper 2 2 hours	BTEC IT 1hr 30 mins	Business Paper 2 1hr 45 mins	BTEC Enterprise 2 hours
Period 5	Geography Paper 3 45 mins		Cambridge National Sport - 1 hr 15 mins	Spanish Writing 1hr 15 (Higher) 1 hour 10 (Foundation)	

Practical Exams

	Hospitality and Catering	Spanish speaking exams	Music	Photography	Art
Wednesday 28th January 2026	Periods 3-5	Periods 1-5			
Thursday 29th January 2026		Periods 1-5			
Friday 30th January 2026	Periods 3-5	Periods 1-5			
Monday 2nd February					Periods 1-5
Tuesday 3rd February			Periods - 1-5	Periods - 1-5	
Wednesday 4th February					Periods - 1-5
Thursday 5th February			Periods - 1-5	Periods - 1-5	

STUDENT WEEKLY

Week A

w/c Monday 9th February 2026

Year 13 Exams - Meeting Room 3/3a

Year 13 PPE 2 - Week 1

Week A

	Monday 9th February 2026	Tuesday 10th February 2026	Wednesday 11th February 2026	Thursday 12th February 2026	Friday 13th February 2026
Periods 1&2	Maths P1 2hrs Sociology P1 2hrs	Chemistry P1 2hr 15mins Economics P2 2hrs	Psychology P1 2hrs	Maths P2 2hrs Sociology P2 2hrs	Chemistry P2 2hrs 15mins Psychology P2 2hrs
Periods 3&4	Biology P1 2hr 15mins Physics Paper 1 2hrs	Law P1 2 hrs Further Maths Paper 1 1hr 30mins	History P1 2hrs 30mins Business P1 2hrs Computer Science Paper 1 2hrs 30 mins (SSWL students)	English P1 2hrs 30mins	Computer Science P1 2hrs 30mins (RAWL students)

Year 13 PPE 2 - Week 2

Week B

	Monday 23rd February 2026	Tuesday 24th February 2026	Wednesday 25th February 2026	Thursday 26th February 2026	Friday 27th February 2026
Periods 1&2	Maths P3 2hrs Sociology P3 2hrs	Law P2 2 hrs Further Maths P2 1hr 30mins	Further Maths P3 1hr 30m	Chemistry P3 1hr 30mins Psychology P3 2hrs	Biology P3 1hr 30mins Physics P3 2hrs
Periods 3&4	Biology P2 2hr 15mins Physics Paper 2 2hrs 15mins	History P2 2hrs 30mins	English P2 2hrs 30mins Economics P3 2hrs	Computer Science P2 2hrs 30mins	Business P3 2hrs

Useful information:

- **Lunch money needs a top up?** If you need to top up your lunch money account, the easiest way is online: **School Gateway details:** <https://login.schoolgateway.com/0/auth/login>
- **Lost something?** First try retracing your steps, if you can't find it, lost property is taken to reception, please ask here.
- **Biometrics/Fingerprints not working ?** Please inform your AM, who will contact the school office.

Worried? Need support?

- Speak to any teacher/your AM or there is- [The SHARP System](#)
- If you are looking for support and advice regarding a mental health issue for yourself or someone close to you, then you will find lots of help at Kooth [Here is the link.](#)
- If you have a notice you would like added to the student weekly, email Mr Wormald (twormald@rivers-aptations.org) by Friday 9am the week before.